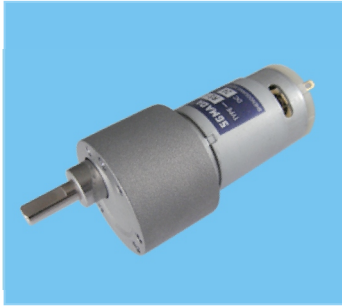


DS-37RS395 DC GEAR MOTOR Series DongShun



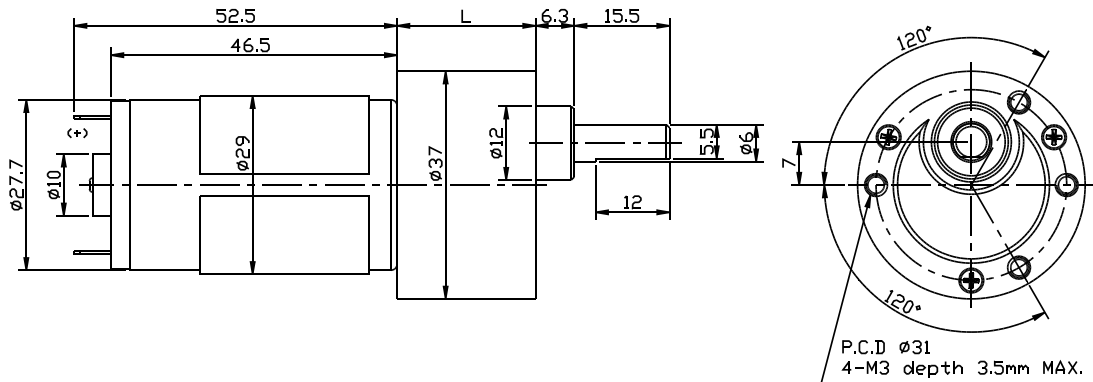
Main voltage: 3VDC、6VDC、9VDC、12VDC、24VDC、36VDC

Typical applications: Auto shutter, Money detector, Binding machine, Automatic TV rack, Packing bank note machine, Limelight, Tissue machine, Office equipment, Household appliances, Automatic actuator.

Weight: 170~190g/pcs (approx)

Packing details: CTN size: 36.5X31XH17cm 60pcs/CTN G.W.13Kgs

APPEARANCE SIZE



Gearbox data:

Number of stages	2、3 stages reduction	4、5 stages reduction	6、7 stages reduction
Reduction ratio	6、10；20、30	60、90；120、180、270	489、540、810；1620、2430
Gearbox length "L" mm	22.5	25 27	29
Max. Running torque	2Kgf·cm	10Kgf·cm	10Kgf·cm
Max. Gear breaking torque	8Kgf·cm	30Kgf·cm	30Kgf·cm
Max. Gearing efficiency	81%；73%	65%；59%	53%；48%
Other reduction ratio please telephone or e-mail to our engineering department.			

Motor data:

Motor name	Rated Volt. V	No load		Load torque				Stall torque	
		Current	Speed	Current	Speed	Torque	Output power	Torque	Current
		mA	r/min	mA	r/min	gf·cm	W	gf·cm	mA
RS-395123000	12	≤60	3000	≤250	2200	65	1.4	260	800
RS-395124500	12	≤90	4500	≤430	3300	80	2.6	320	1400
RS-395126000	12	≤130	6000	≤750	4500	105	4.7	420	2600
RS-395243000	24	≤40	3000	≤120	2200	65	1.4	260	400
RS-395244500	24	≤50	4500	≤220	3300	80	2.6	320	700
RS-395246000	24	≤70	6000	≤380	4500	105	4.7	420	1400

- 1、 This table lists some motors parameters, others please refer to specific parameters of Page 144.
- 2、 After connecting motor and gearbox which is named gearmotor the output torque: motor torque X reduction ratio X gearing efficiency; output speed: motor speed / reduction ratio.

NOTE:

- 1、 Gearmotor named methods: e.g. DS-37RS395123000-90K Motor please refer to the motor data RS-395123000. Gearbox please refer to gearbox data reduction ratio 90. Related to gearmotor output speed and torque please refer to motor data.
- 2、 Motor can be installed with magnetic encoder, encoder parameters please refer to Page 139.
- 3、 Gearbox shell material: zinc alloy.
- 4、 Gearbox gear materials: The first stage gear: plastic gear. The final stage gear: 45# steel Heat-treatment gear. Other stages gear: powder metallurgy gear.
- 5、 Standard output shaft after reducing: 6.0mm. other sizes of the output shaft can make as client request.
- 6、 Chart only for reference, products shall prevail the entity.